



Improve Your Machining with Our New Drill Fix PRO™

| Our Most Robust, Versatile & Economic Indexable Drilling Platform



The new Drill Fix PRO indexable drilling platform is overdelivering in tool life, productivity and hole quality. It's the perfect tool for obtaining high-quality holes, primarily in general engineering applications, and comes with a wiper included in every outboard insert to deliver ideal surface quality.

SAVE

SEPTEMBER 1 – DECEMBER 31, 2023

Valid for all geometries and grades, including the new **KCMS35** and **KCMS40**.

OPTION ONE

Buy **10** inboard and **20** outboard inserts, get the body* **FREE**

(*KM bodies excluded)

OPTION TWO

Buy **10** inboard and **10** outboard inserts, get the body* at **50% DISCOUNT**

(*KM bodies excluded)





Cost-Effective & Versatile Indexable Drilling:

Drill Fix PRO offers an economic drilling platform that covers a broad spectrum of materials and applications.

Robust Toolholder Design:

Extreme rigidity resulting in less deviations, vibrations and noise.

Wiper Geometry on All Outboard Inserts:

Creating superior surface finish and hole quality.

Optimized Coolant Delivery System:

Large twin coolant channels provide enhanced coolant flow, resulting in superior chip evacuation and increased tool life.

Applications



Drilling



Convex Entries



Flat Bottom



Half Cylinder



X-Offset



Chain-Drilling



Stacked Plates



Cross Holes



Inclined Entries



Inclined Exits



Corner-Drilling 45°

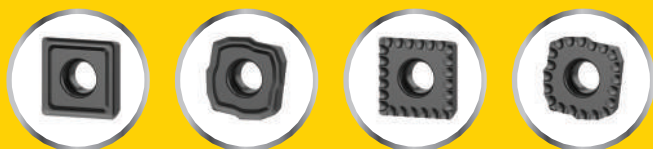
Additional Features

Maximized Chip Flute Size

Four Times Indexable Inserts

Self-Centering Geometry

Compatible with Our **NEW** KCMS35 and KCMS40 Indexable Drilling Grades



Our new stainless steel and high-temp alloy grades KCMS35 and KCMS40 meet the demand for reliability and increased tool life for indexable drilling in the petrochemical, chemical, energy and aerospace industries. These advanced high-PIMS grades feature a smooth coating surface, optimum layer adhesion and high depth-of-cut notching resistance to increase reliability and significantly extend tool life.



**VALID
THROUGH
DEC. 31**

New **KCP25C** Steel
Turning Grade with
KENGold™
**CVD COATING
TECHNOLOGY**



ADDITIONAL 20% DISCOUNT*

*ON NET PRICE. Maximum order 50 pieces per type. Promotion valid from Sept. 1 – Dec. 31, 2023.

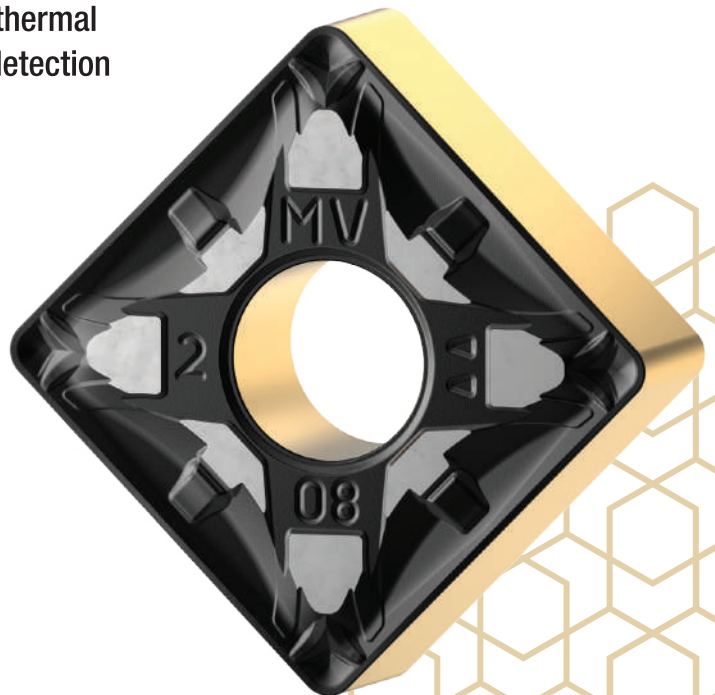
KENGold

Meet the next generation of CVD coating technologies featuring uniform layers that resist abrasion, provide a strong thermal barrier, improve edge toughness and allow for easy detection of wear due to its gold flange.

**Predictable performance turn
after turn**


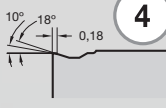

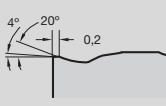

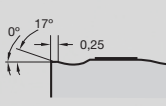

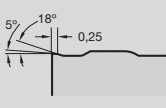

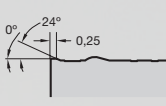
**Easy wear identification to
reduce waste of unused edges**

**Increases accuracy and output
rate reliability and delivers
consistent tool life**


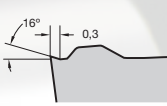

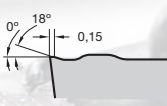


Chip Control Geometries

Kenloc™ Inserts

Type of Operation	Insert Geometry	3	Insert	Profile	4	feed rate — (mm)										
						0,04	0,063	0,1	0,16	0,25	0,4	0,63	1,0	1,6	2,5	5,0
						0,1	0,16	0,25	0,4	0,63	1,0	1,6	2,5	4,0	6,3	10,0
						depth of cut — (mm)										
1 Finishing	2 MG-FN	P K			5 0,08–0,3											
					6 0,2–3,0											
Medium Machining	MG-MV	P K				0,15–0,50										
						0,50–5,5										
Medium Machining	MG-MN	P K				0,12–0,6										
						0,3–5,0										
Roughing	MG-RP	P K				0,18–0,7										
						0,6–5,0										
Roughing	MG-RN	P K				0,25–0,8										
						1,1–7,0										

Screw-On Inserts

Finishing	MT-FP	P K				0,063–0,25										
						0,16–1,6										
Medium Machining	MT-MF	P K								0,1–0,4						
										0,32–3,2						

- 1 **Machining Operation** —
for what the insert geometry is designed

2 **Chip Control Geometry Designation** —
example: MG-MV = CNMG-120408MV

3 **Primary Workpiece** —
Material Group
- 4 **Chipbreaker Geometry** —
section is through nose radius of insert

5 **Feed Rate Range** —
for best results, use the center 60% of the range

6 **Depth-of-Cut Range** —
for all inserts in the program, select smaller inserts
for lighter cuts and larger inserts for heavy cuts



Turning Promotions

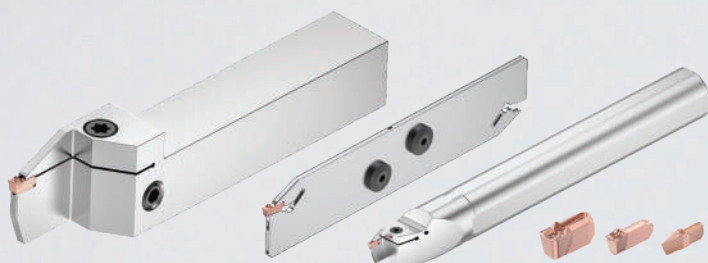


+ PROGRAM EXTENSIONS | 2023

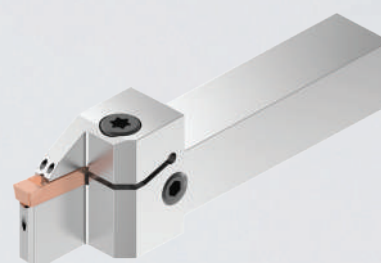
GROOVING & CUT-OFF

SPECIAL OFFER* BUY 20 INSERTS,
GET 1 TOOL HOLDER FOR **FREE!**

Beyond™ Evolution™



A4™



SPECIAL OFFER* BUY 10 INSERTS, GET
AN ADDITIONAL 5 INSERTS FOR **FREE!**

LT Threading Inserts



Promotion only applicable to products listed above that are in First Choice. Valid September 1 - December 31, 2023 in Europe, Middle East and Africa.
Promotion not applicable with other offers. No returns. Kennametal reserves the right to revise or cancel this promotion at any time.

